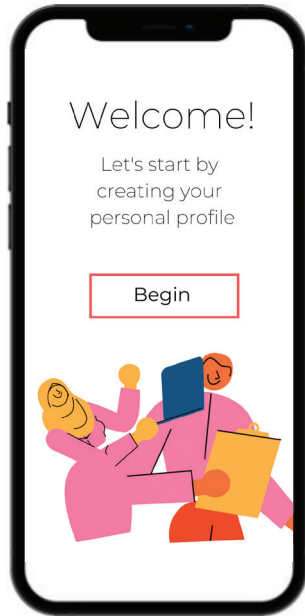
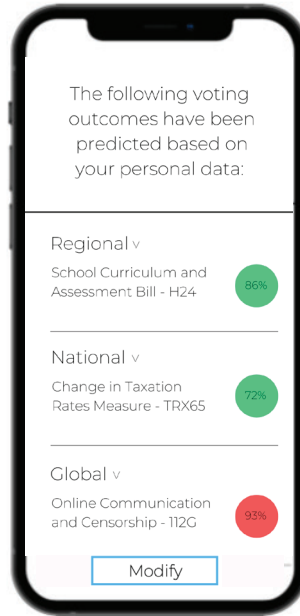


Global Citizen®

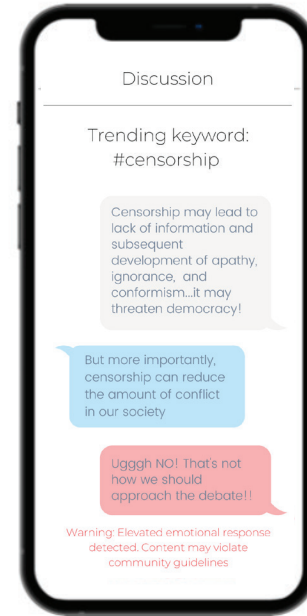
The inclusive, transparent app for everyone to regulate AI governance.



Participate
as a global citizen to
define the limits of AI.



Express
your values and gain
visibility into key issues.



Define
the conversation by
engaging in real time.

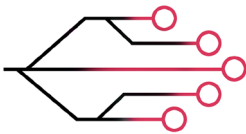
Terms & Conditions: Please read these terms and conditions of use carefully before accessing, using or obtaining any materials, information, products, or services. Global Citizen® is a registered trademark of Global Citizen Corporation. Global Citizen® is inclusive of all those legal parties who choose to engage in app activity. All data inputted into the app is used by Global Citizen Corporation to train an AI that has the ability to make recommendations to users based on their personal behavior and preferences. Global Citizen Corporation does not incur any risk or liability for voting decisions made by users per the suggestion of the Global Citizen® algorithm that do not support a user's real preferences, values, beliefs or 'similar'. Global Citizen Corporation acknowledges that there may be discrepancies and/or errors made by the app. By using the app, users acknowledge their awareness of this potential risk. All measures, bills, and laws available within the app must be submitted by a legal and officially certified representative of a recognized governing body. Any such asset that does not meet our security and validation criteria will not be made available within the app. Global Citizen® is available for use to all global citizens who meet our eligibility criteria.

How to distinguish between Official and 'deviant' CitiCred bracelets

A Guide for Artifiland Border Spot Inspectors

'Deviant' CitiCred bracelets are highly sophisticated and capable of passing the automated AI inspection gates at Border Control despite being designed to withhold personal data and often being used for illegal border crossings. The only way to attempt to distinguish between them is through physical, individual inspection by an officer.

Please note, the following guidelines are constantly subject to change to keep up with the constant refinement of black-market bracelets.



Government of Artifiland

Official CitiCred bracelet



Identifying 'deviant' CitiCred Bracelets

- **Verify Identity** - confirm citizen can unlock the bracelet using biometric data. Usually this is easily conducted on deviant bracelets but at times it fails so it is always worth checking (see page 8).
- **Check for excessive wear on clasp** - many deviant bracelets are transferred more often between individuals than Official bracelets for illegal border crossings (see pages 9-10)
- **Compare Trust Bead colour** within a colour-similarity chamber. Often deviant bracelets present subtly different Trust Bead coloration due to manufacturing differences (see page 10)
- **Jammer Check** - Deviant bracelets are designed to automatically override attempts to extract personal data. To check for this, the citizen must unlock the device and allow an officer to investigate the Personal Information section and Settings (see pages 10-12).

It's a

DATA POTLUCK



Bring & Share

This Month's Theme:

HEALTH
&
WELLNESS

Medical histories
and home remedies welcomed!

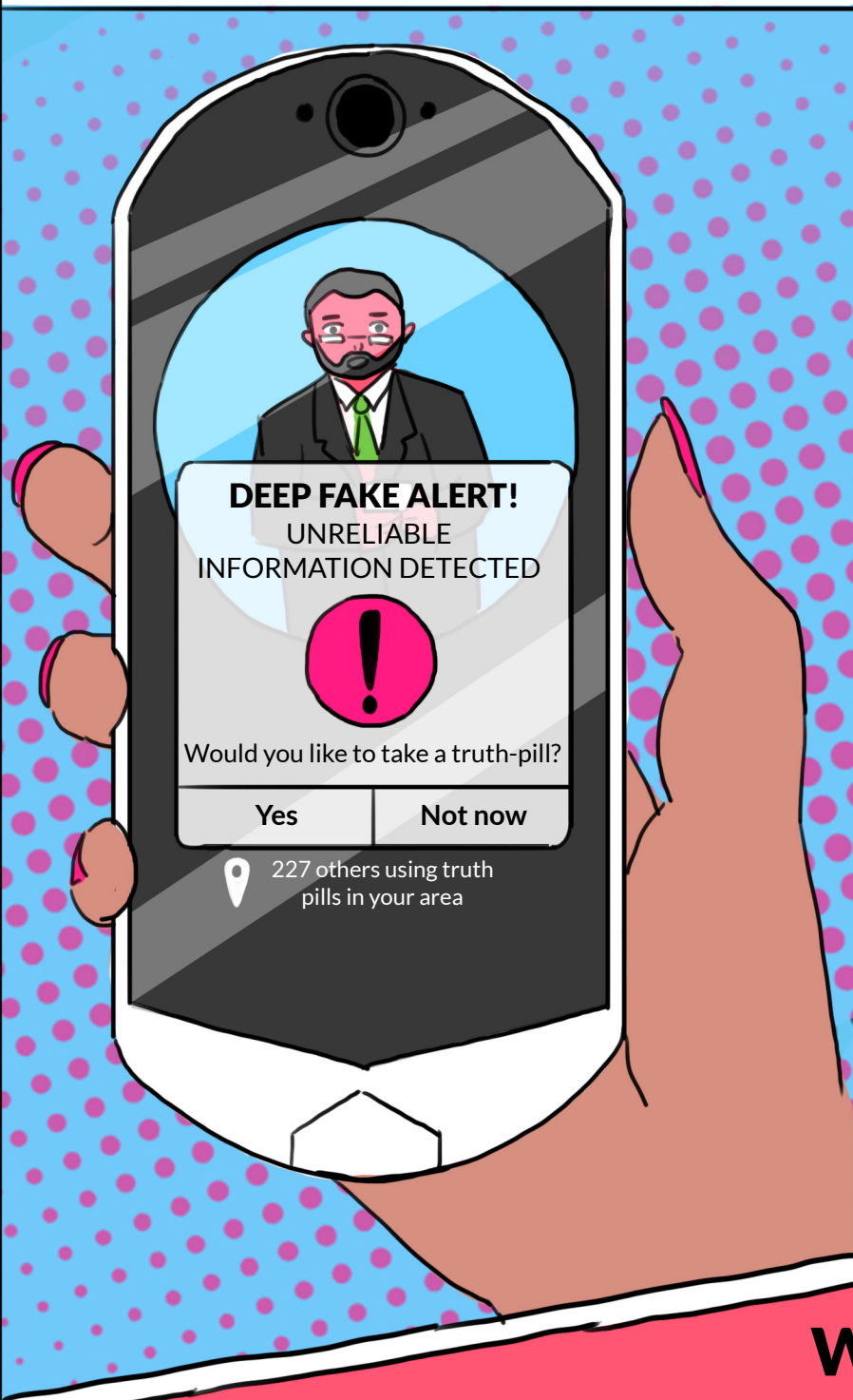
Help build our local
community's resilience
and knowledge base
by contributing
your data...

say 'grassroots'
at the door

It's for us,
by us!

Don't forget
to bring your
own power source!

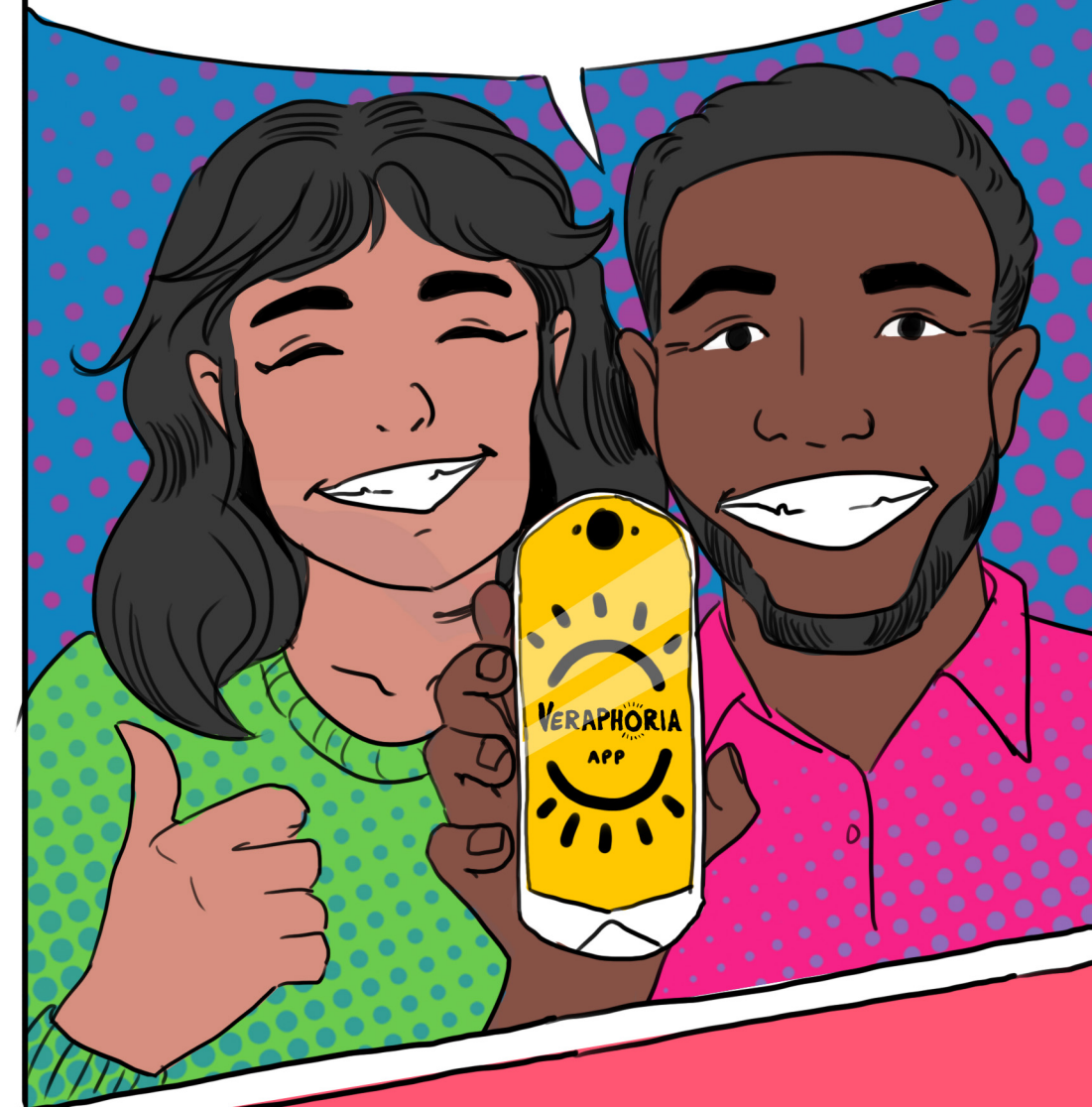
STRUGGLING TO DISTINGUISH
BETWEEN REAL AND FAKE ONLINE?



WHEN YOU ENCOUNTER
FALSE INFORMATION, TAKE A
TRUTH PILL AND FIND JOY IN
DISCOVERING
WHAT'S REAL.



LET'S PREVENT THE SPREAD OF
LIES AND TURN TRUTH INTO
HAPPINESS WITH YOUR PHONE*!



AUTHENTICATED BY THE
WORLD TRUTH COUNCIL

VERAPHORIA
APP

For details of the potential side effects of excessive use, please visit us at www.veraphoria.net

*Only compatible with smartphones equipped with 3DPharmaPrint.